

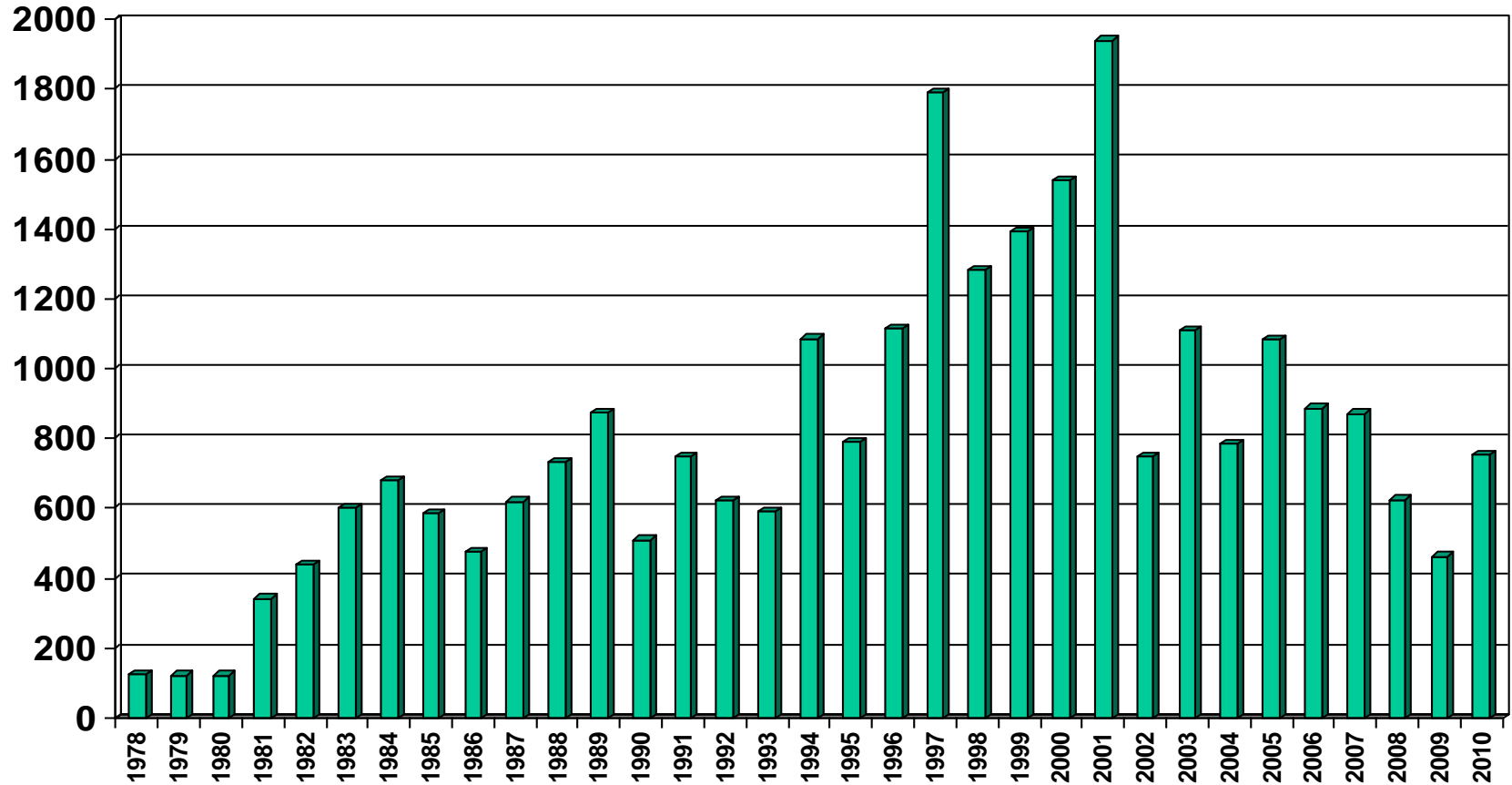
Robot Facts 2011



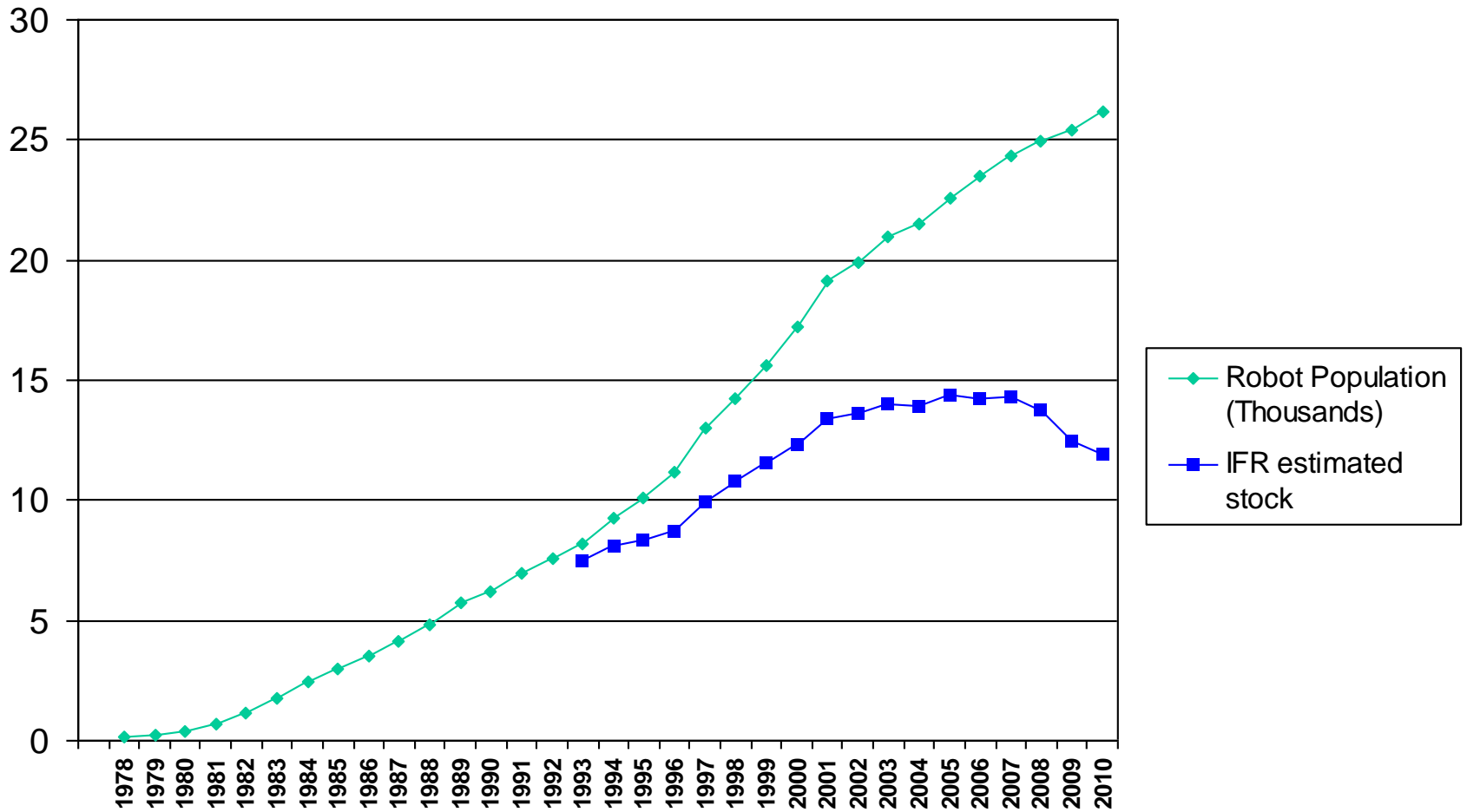
Statistics for New Robot Installations in 2010

Total = 755

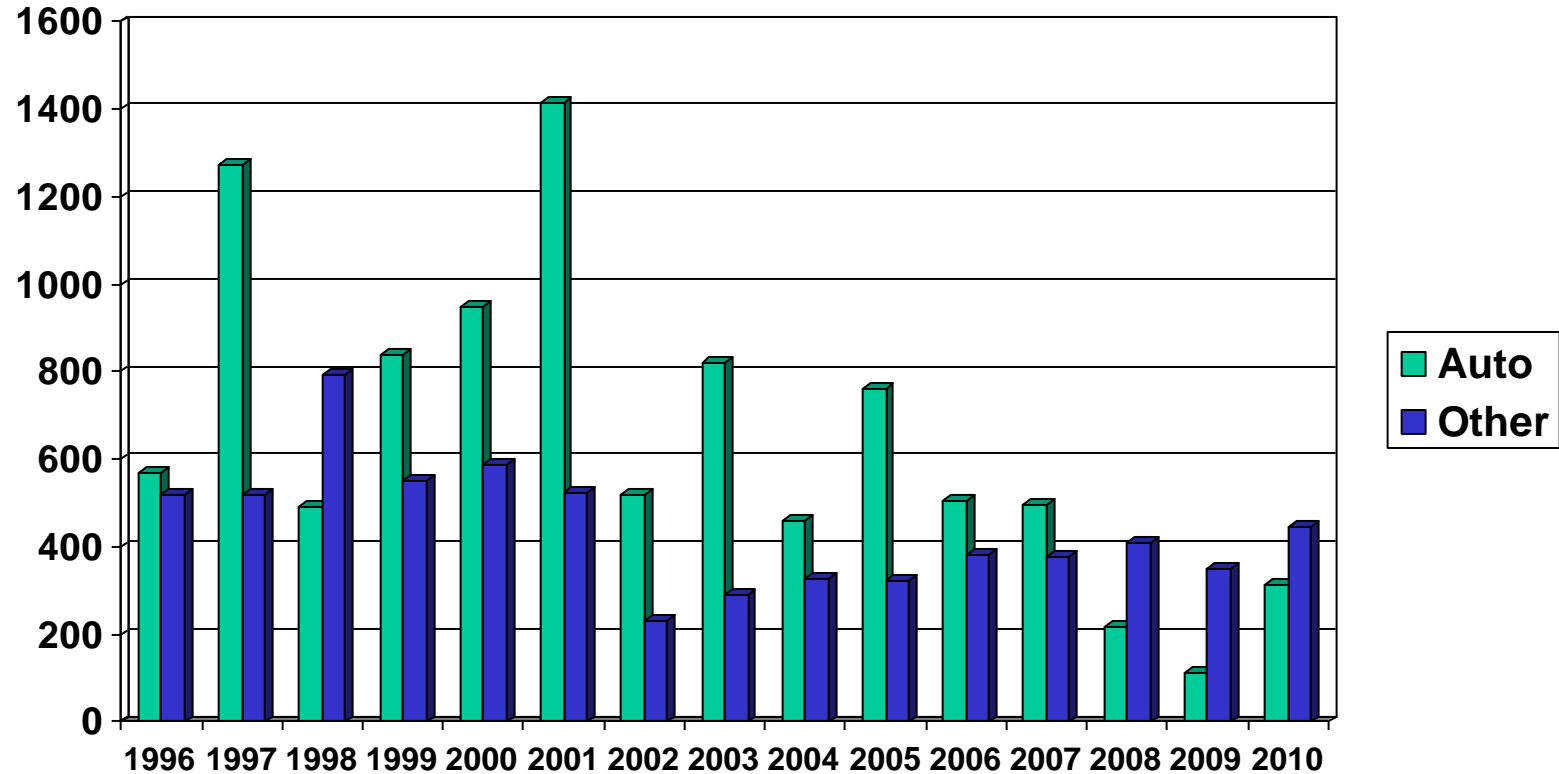
Number of Robots Installed per Year



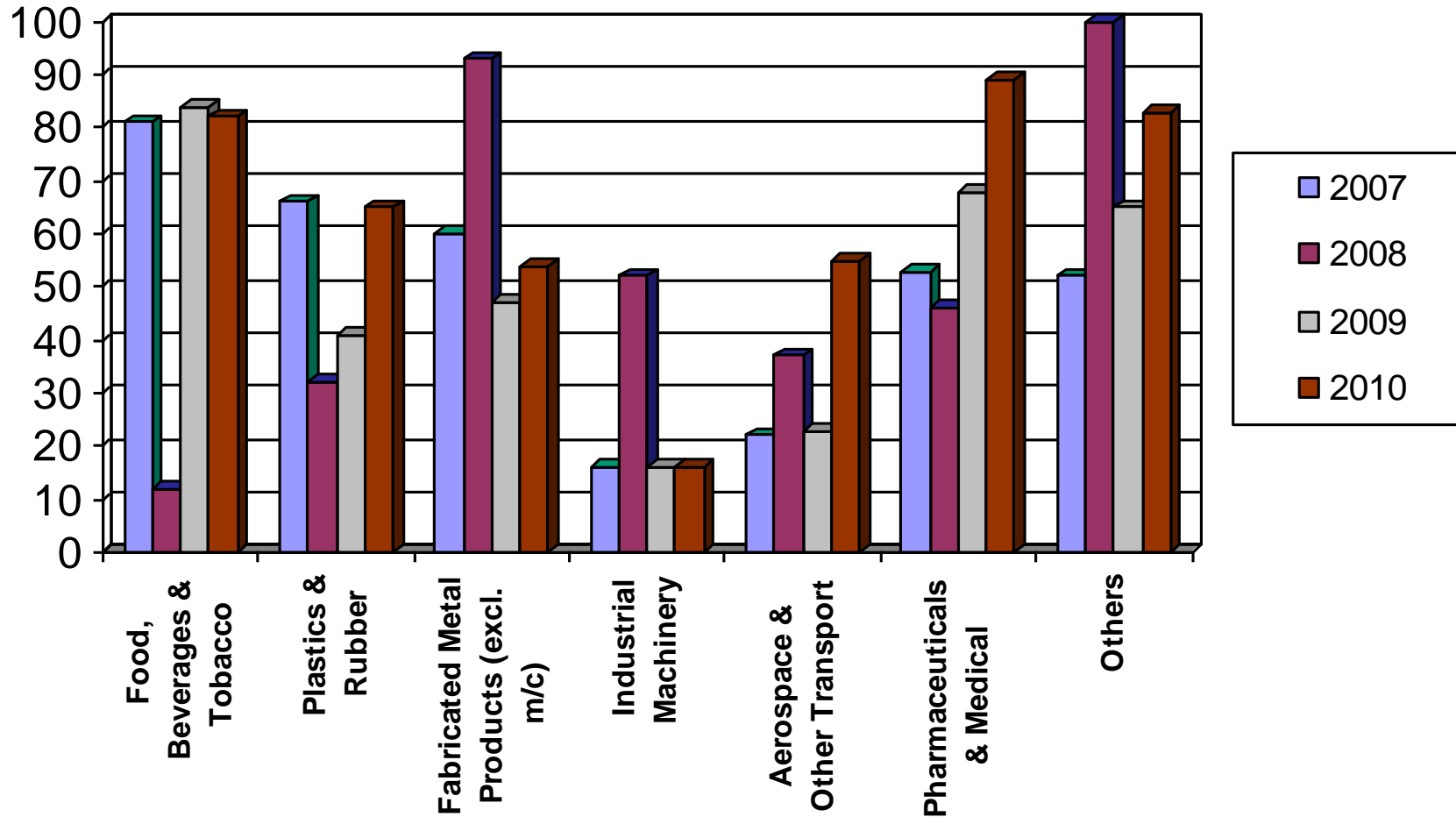
UK Robot Population Growth



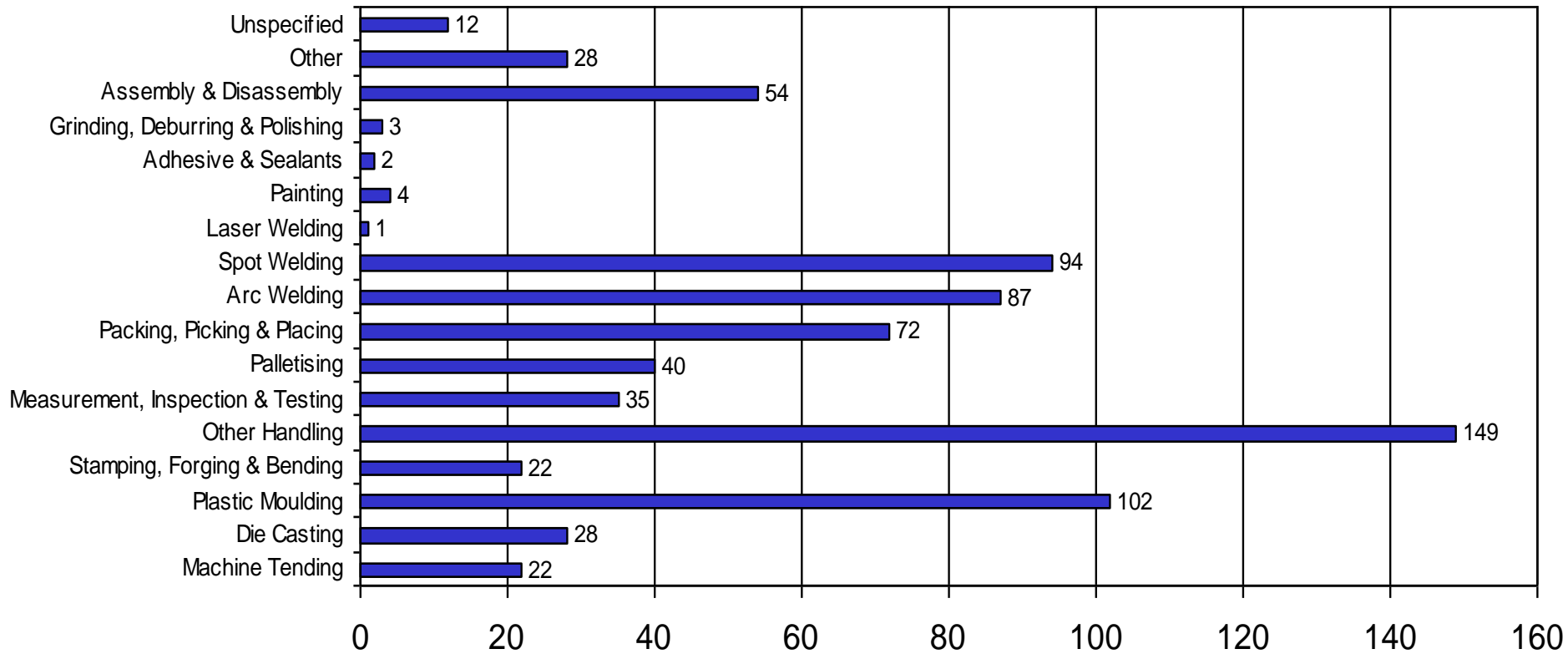
Auto/Other Industry Comparison



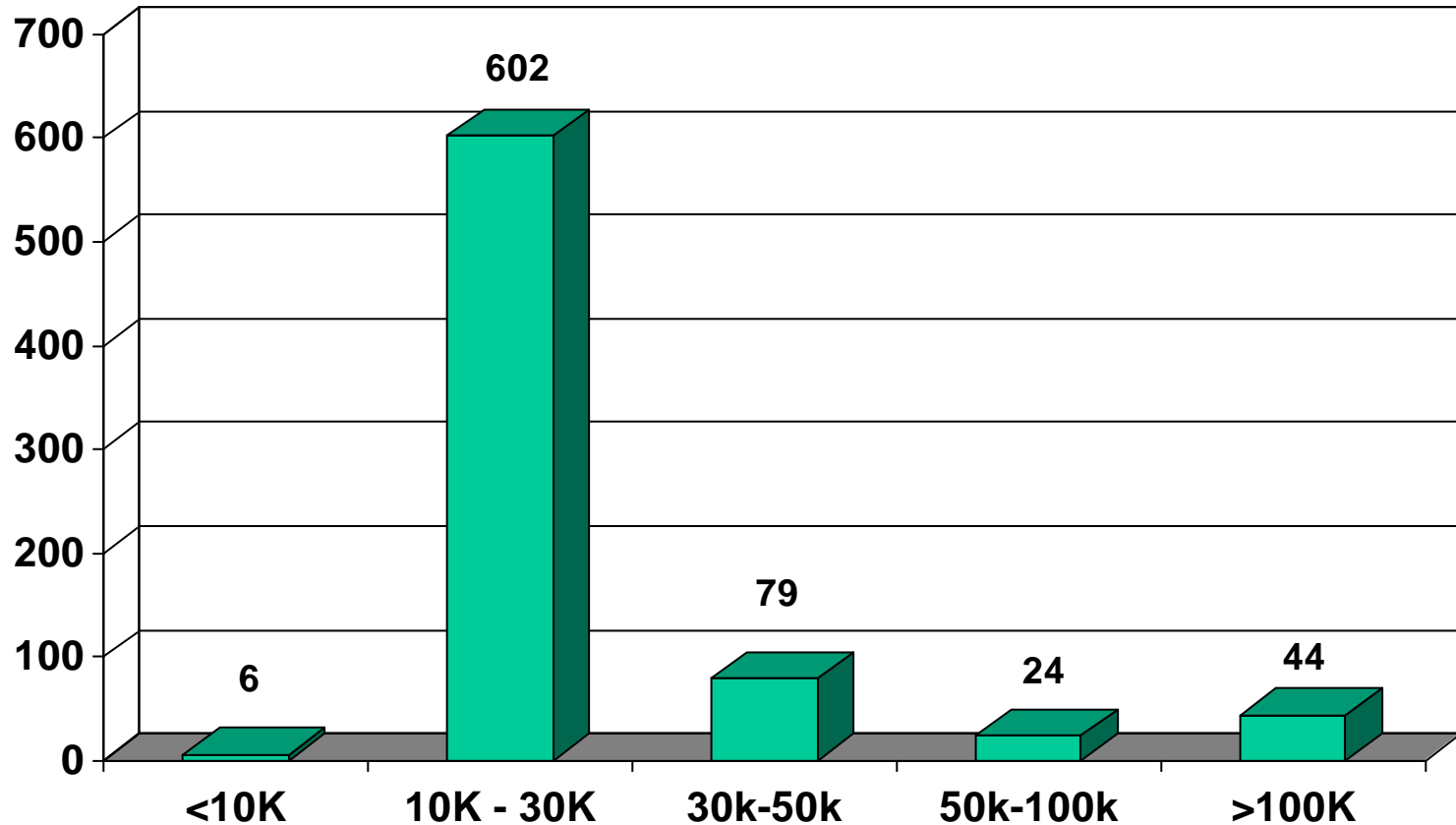
2007-10 Non-Automotive Industry Analysis



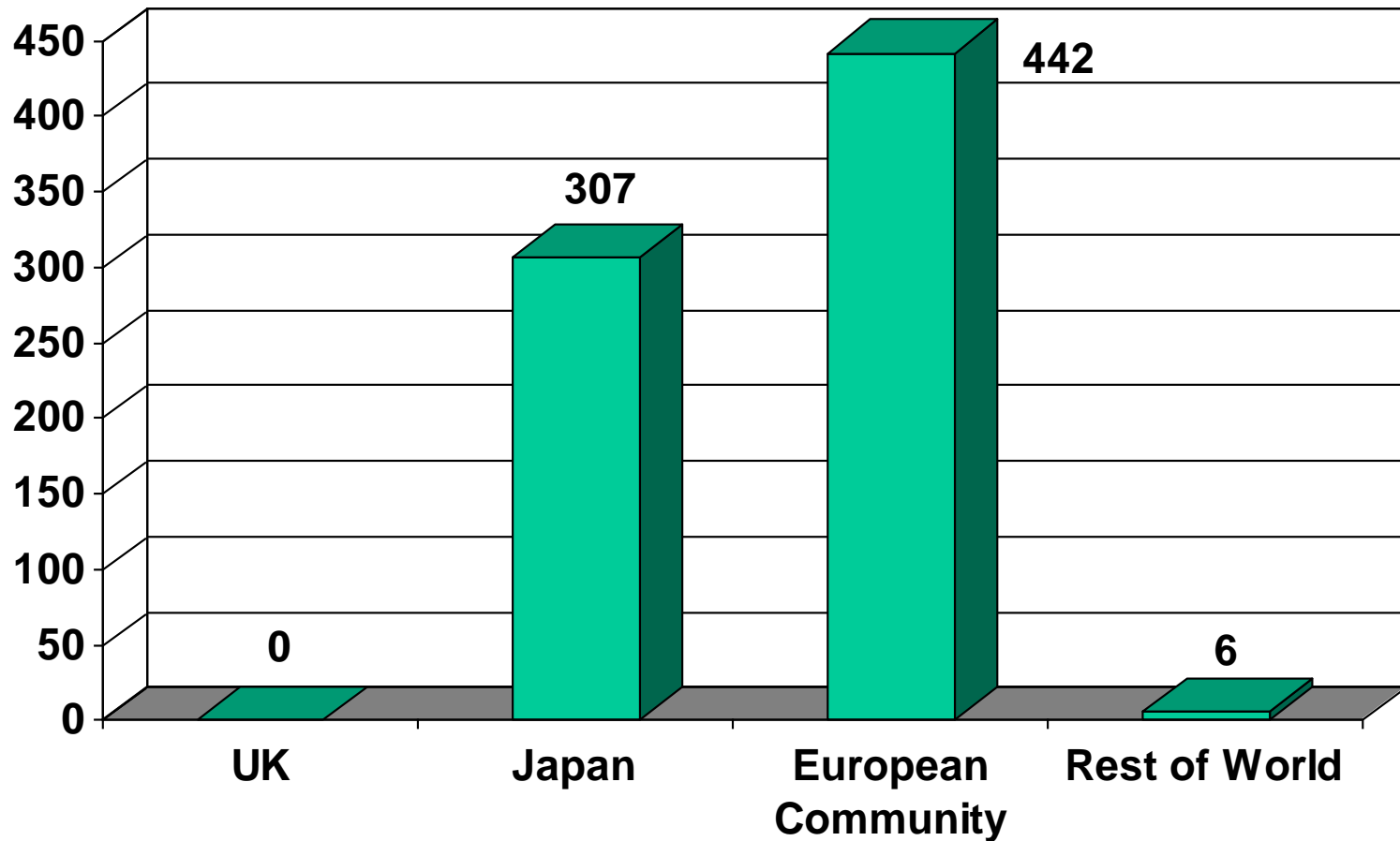
UK Robot Application Analysis for 2010



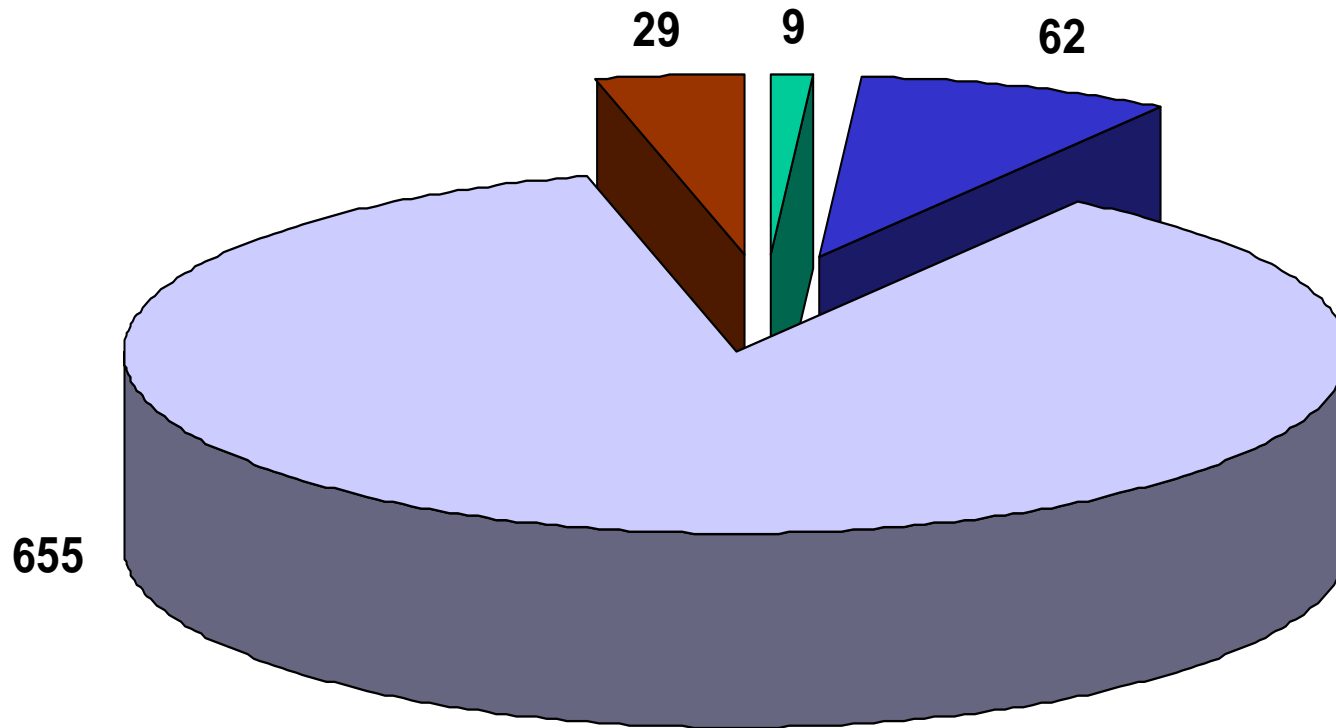
UK Robot Cost Analysis (£) for 2010



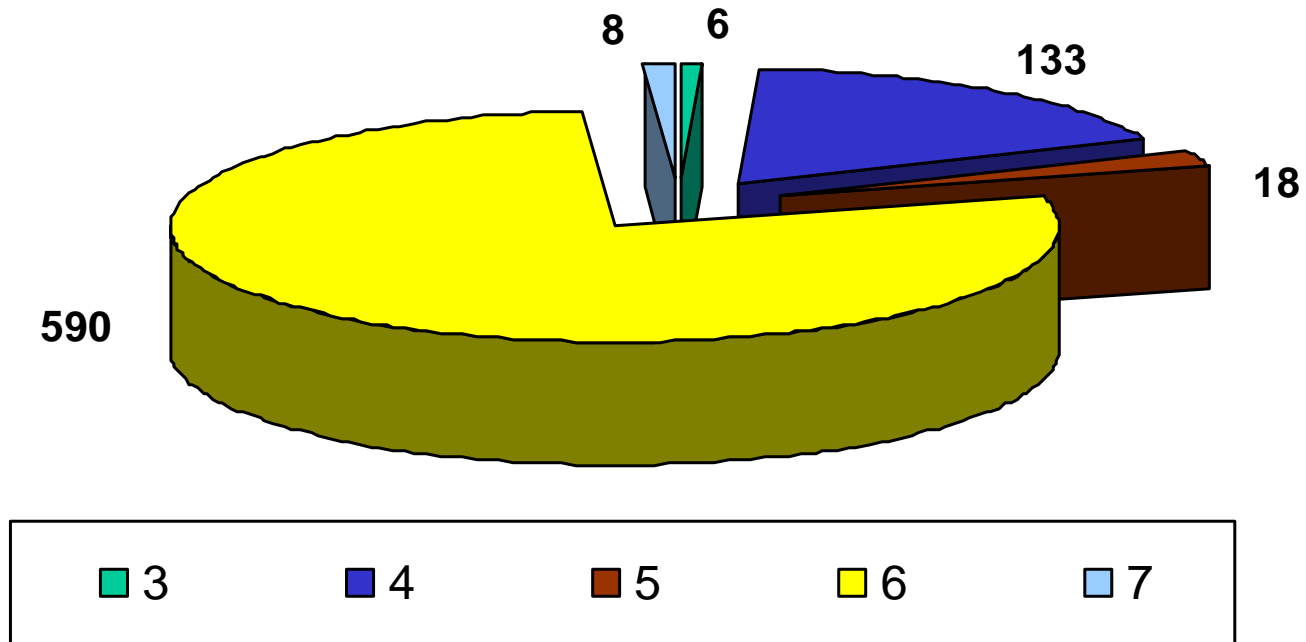
Country of Origin of Robots Installed in 2010



Mechanical Structure for 2010

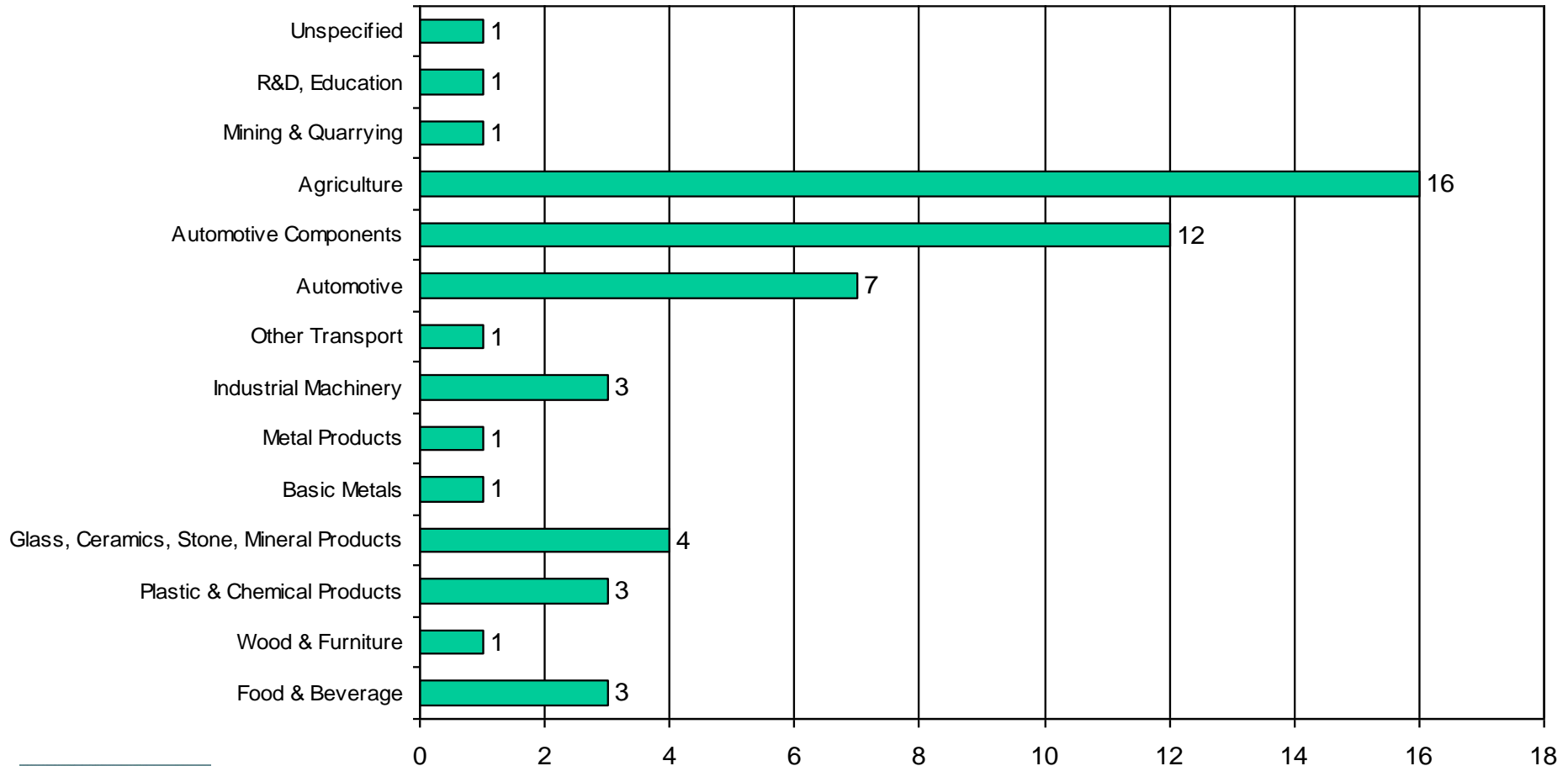


Number of Axes for 2010

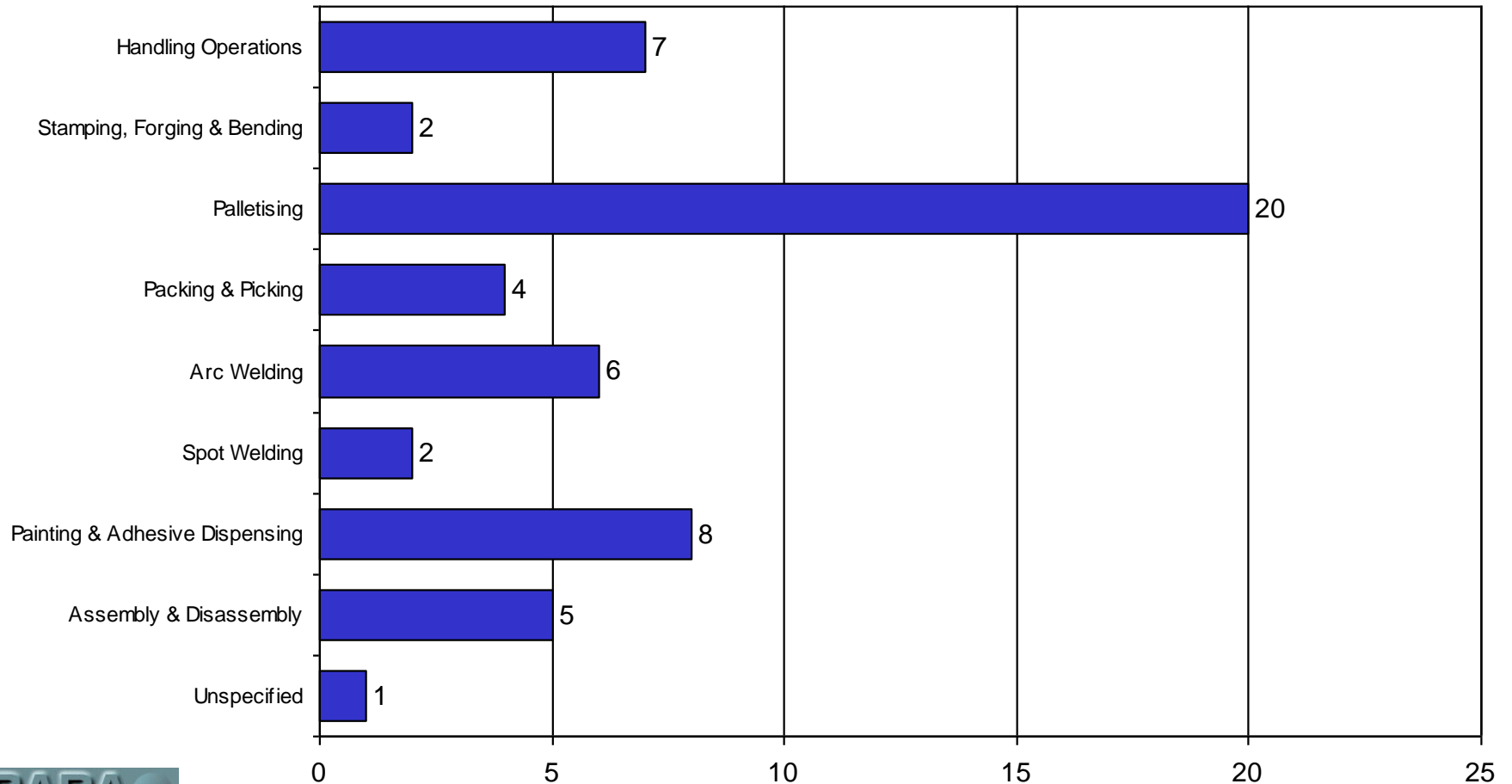


Statistics for Refurbished Robot Installations in 2010

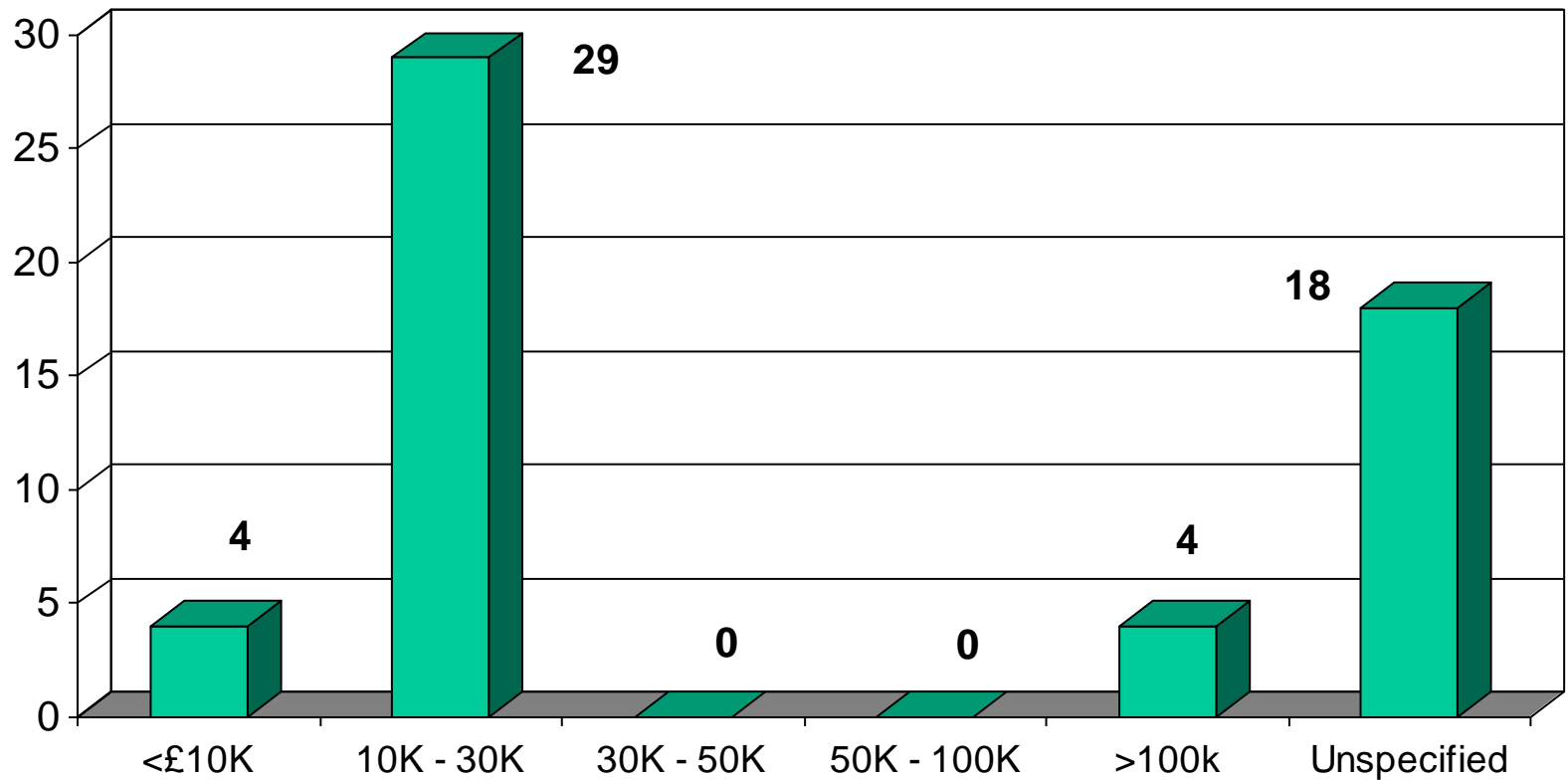
UK Robot Industry Analysis for 2010 (Refurbished Robots)



UK Robot Application Analysis for 2010 (Refurbished Robots)



UK Robot Cost Analysis for 2010 (Refurbished Robots)



Thank you to the following companies and others who participated in the survey

- AA Robotics
- ABB Ltd
- Cloos UK Ltd
- Cyber-Weld Ltd
- FANUC Robotics (UK) Ltd
- Kawasaki Robotics UK Ltd
- KUKA Automation + Robotics
- Mitsubishi Electric
- Nachi Europe U.K.
- Neuteq Europe Limited
- Olympus Technologies Ltd
- Omron Electronics Ltd
- Pace Mechanical Handling Ltd
- Pentangle Engineering Services Ltd
- Quasar Automation Ltd
- RNA Automation
- Staubli (UK) Ltd
- System Devices UK Ltd
- Tekpak Automation Ltd
- TM Robotics (Europe) Ltd
- Yaskawa UK Ltd